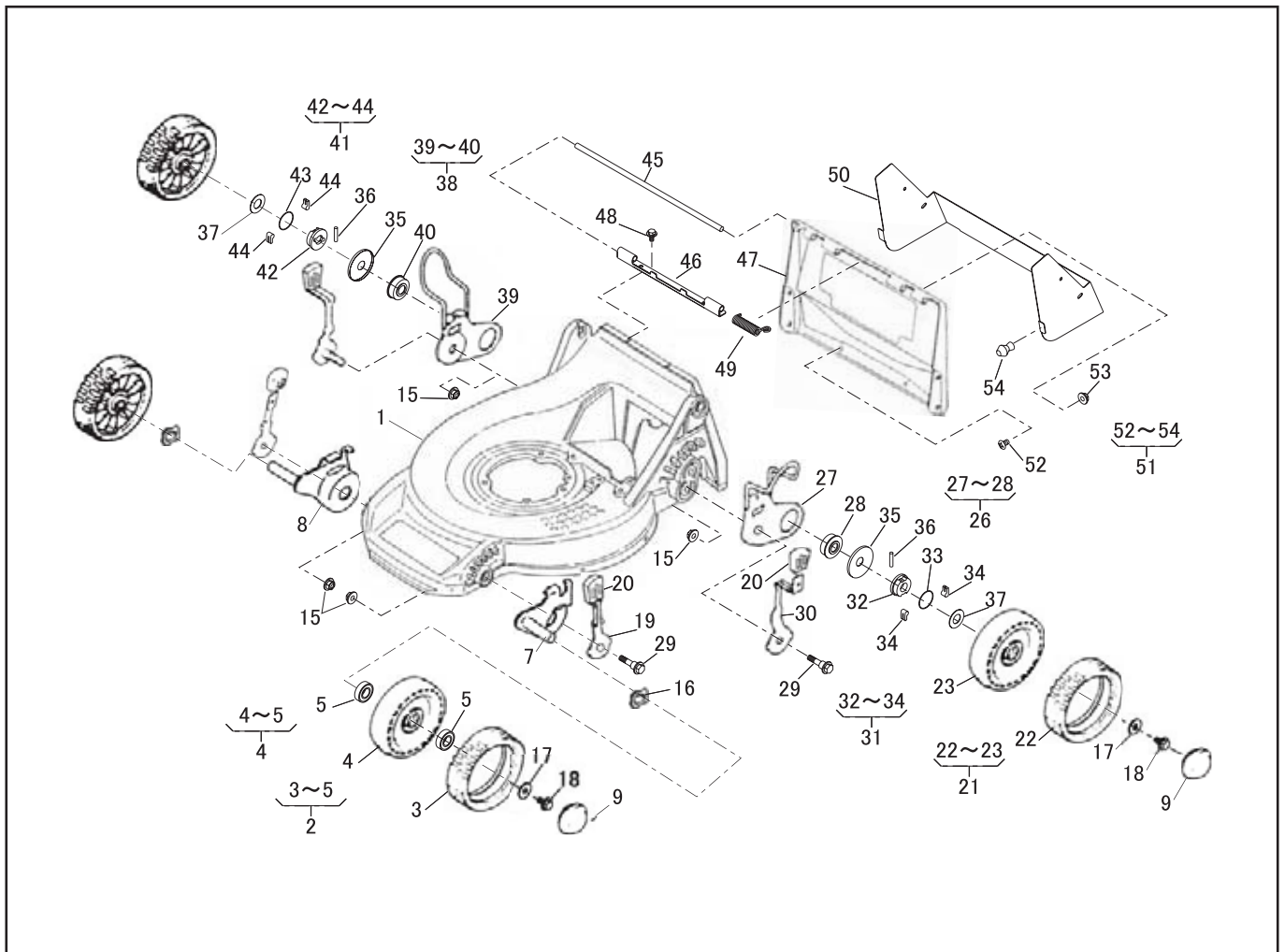




TOSAERBA SARP

SLM-5360HX scocca vecchia

ESPLOSO RICAMBI

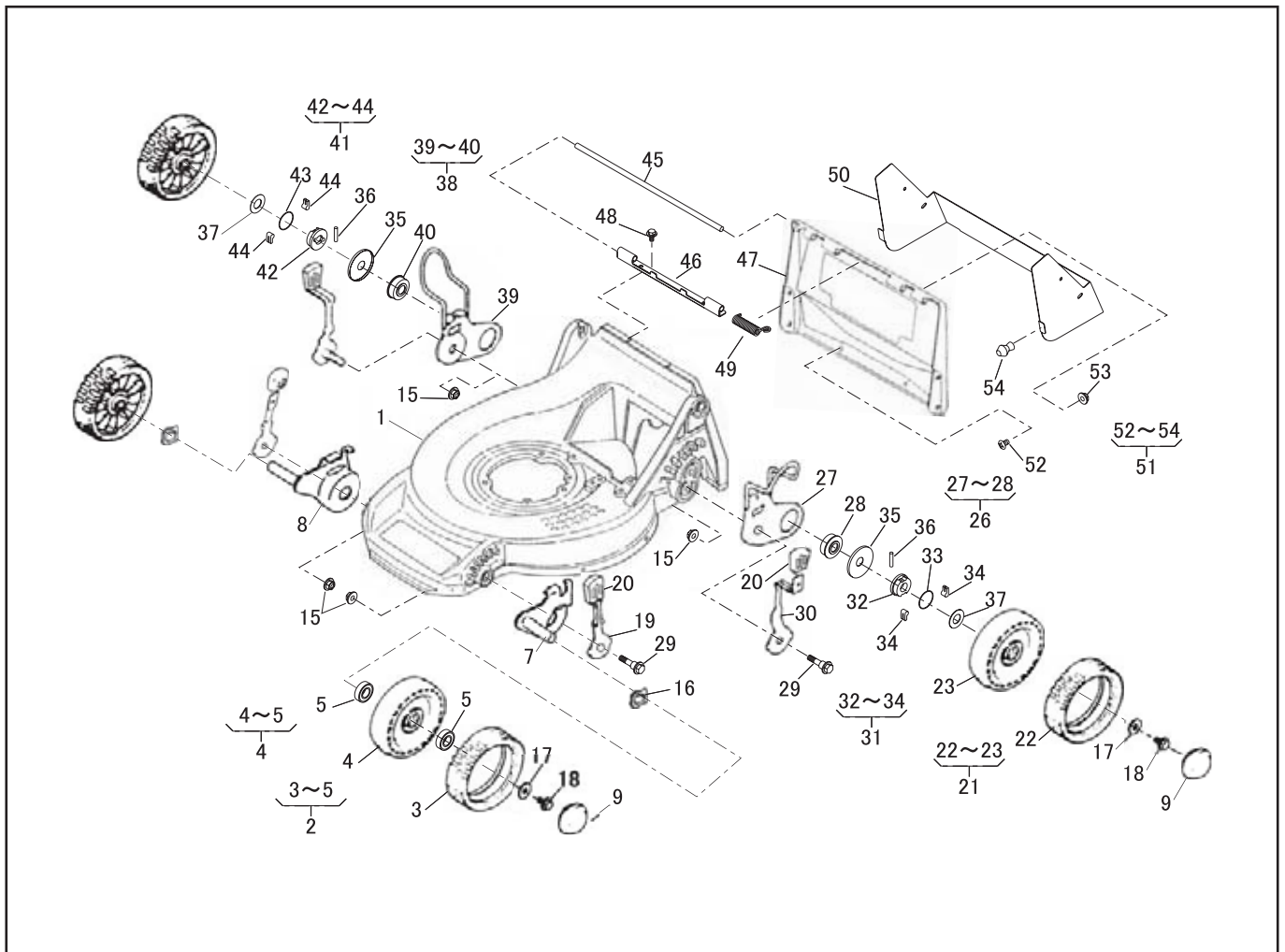


PARTS LIST

MODEL : SLM5360HX (SARP)

46014-149

REF. No.	PARTS No.			PARTS NAME	WHEEL			1/2		REMARKS
					Q'TY INCLUDING	PRICE()	RECOMM.(%) Lot.100	Jan.25,2003		
1	51043	136	42	HOUSING	1			3		
2	71041	103		WHEEL ASSY	2			3		
3	91086	102		TIRE		2		15		
4	36107	102		WHEEL		2		3		
5	932L	0696		BEARING			4	5		
6										
7	11142	112		ADJUSTER	2			5		
8	11142	113		ADJUSTER	2			5		
9	36070	110		CAP	4			3		
10										
11										
12										
13										
14										
15	569L	0800		FLANGE NYLON NUT	4			10		M8
16	664V	0626		WAVE SPRING WASHER	2			5		
17	68036	101		WASHER	4			3		
18	31057	181		HEXAGON BOLT	4			3		
19	11150	101	09	ADJUST LEVER	2			5		
20	36061	121		KNOB	4			3		
21	71041	112		WHEEL ASSY	2			3		
22	91086	106		TIRE		2		15		
23	36107	101		WHEEL		2		3		
24										
25										
26	71122	101		ADJUSTER ASSY(L)	1			-		
27	11142	104		ADJUSTER		1		3		

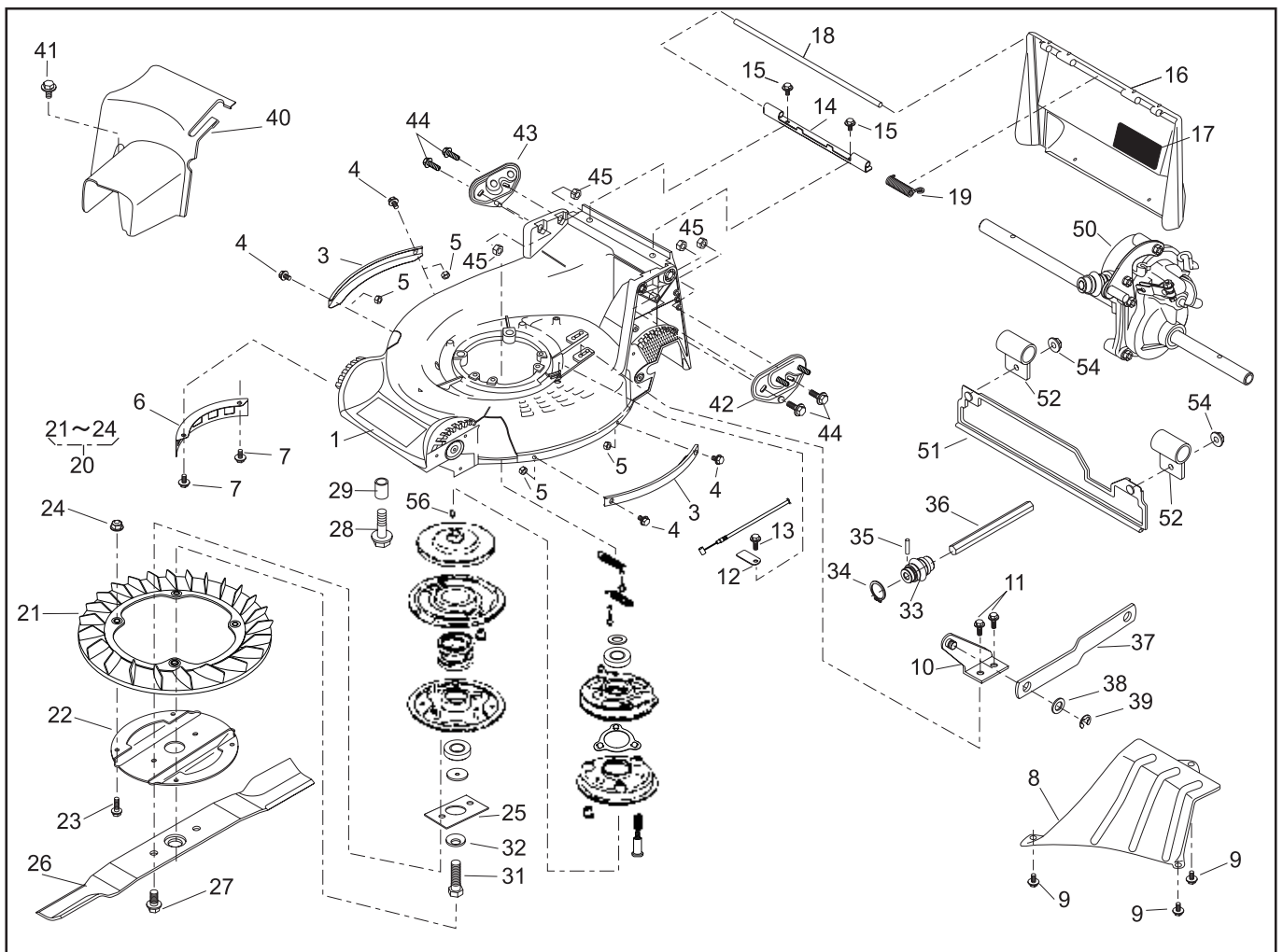


PARTS LIST

MODEL : SLM5360HX (SARP)

46014-149

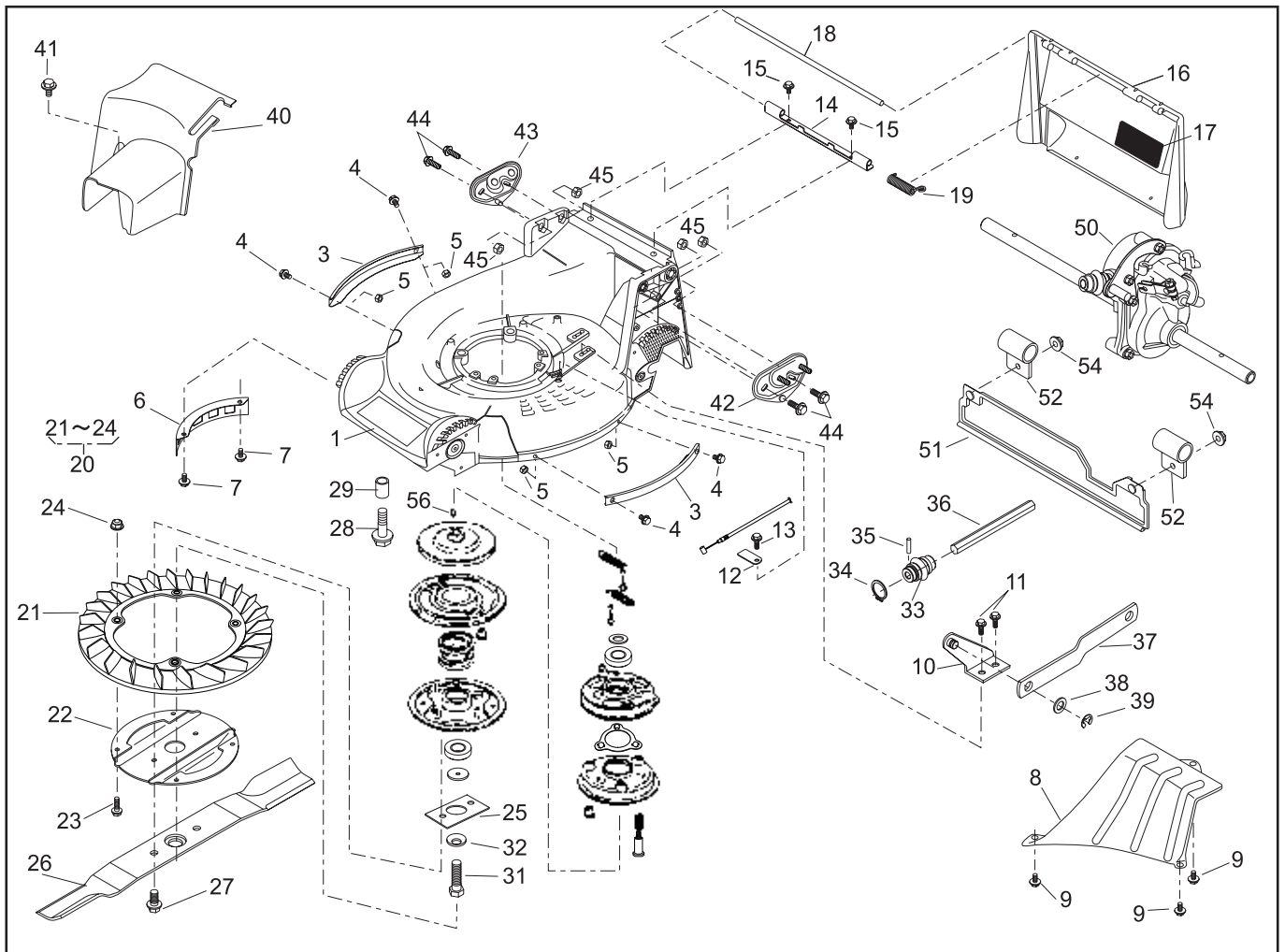
REF. No.	PARTS No.		PARTS NAME	WHEEL			2/2		RECOMM.(%) Lot.100	REMARKS
				Q'TY	PRICE()					
				INCLUDING						
28	945L	0349	BEARING	1				10		
29	31057	132	HEXAGON BOLT	4				5		
30	11150	102	09 ADJUST LEVER	2				5		
31	71158	102	RATCHET ASSY(L)	1				-		
32	11102	138	HOLDER	1				3		
33	68013	266	SPRING	1				5		
34	31034	170	PIN	2				3		
35	61003	112	THRUST PLATE	2				10		
36	31034	137	PIN	2				10		
37	68036	146	WASHER	2				3		
38	71122	102	ADJUSTER ASSY(R)	1				-		
39	11142	105	ADJUSTER	1				3		
40	945L	0349	BEARING	1				10		
41	71158	101	RATCHET ASSY(R)	1				3		
42	11102	138	HOLDER	1				3		
43	68013	266	SPRING	1				5		
44	31034	170	PIN	2				3		
45	64014	234	SHAFT	1				3		
46	11113	292	STAY	1				3		
47	36068	171	46 GUARD	1				3		
48	342J	0612	FLANGE BOLT TAPPING	2				3	M6 × 12	
49	68013	336	SPRING	1				3		
50	36065	298	09 COVER	1				3		
51	71137	194	BOLT AND NUT SET	1				-		
52	376L	0508	(+)TRUSS SCREW	6				3	M5 × 8	
53	579L	0500	FLANGE NUT	6				3	M5	
54	36006	113	ABSORBER	2				10		



PARTS LIST

46014-234

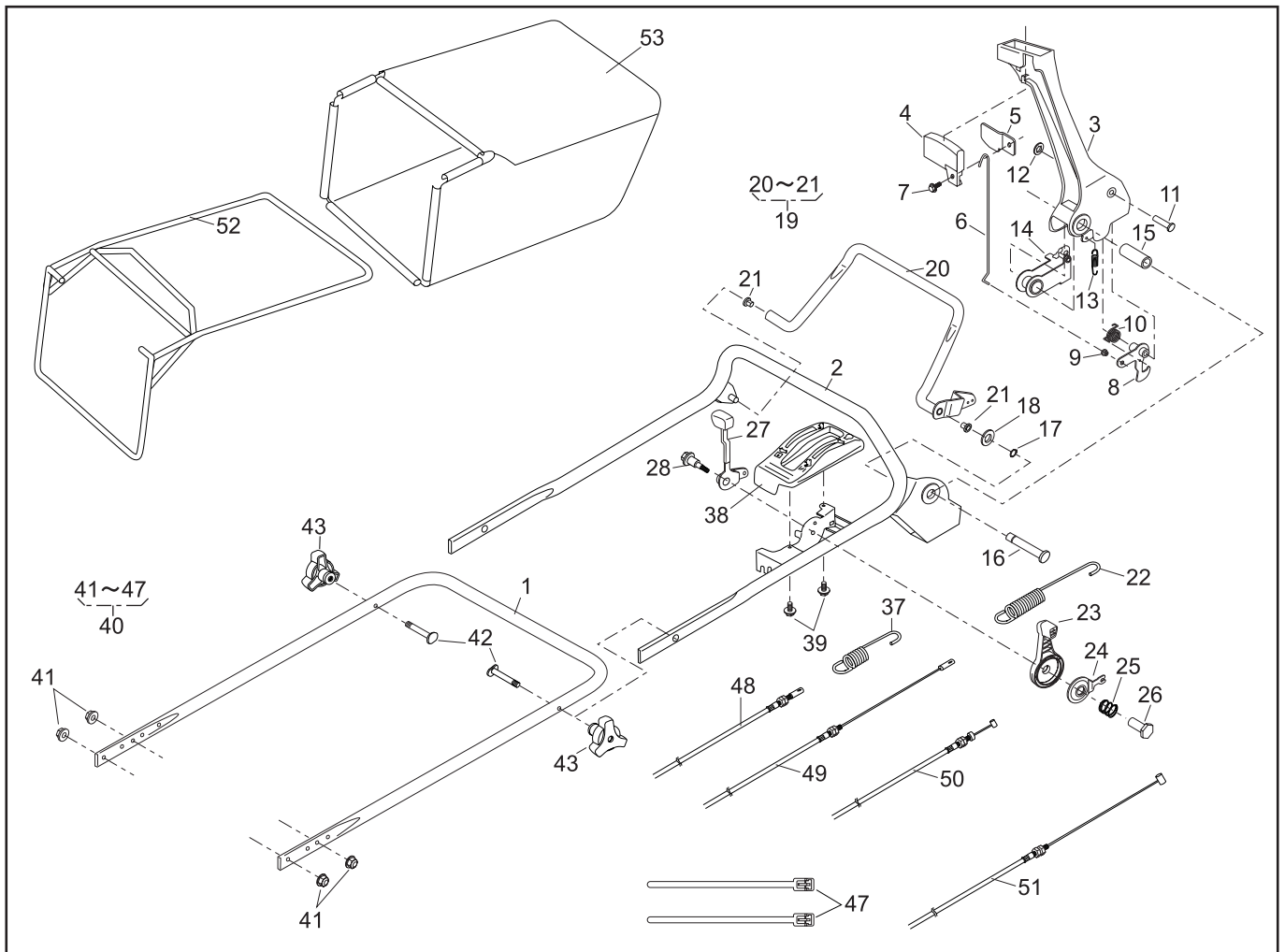
REF. No.	PARTS No.	PARTS NAME	GRASS-CUTTING			PRICE()	1/2	RECOMM.(%) Lot.100	Feb.09,2005	REMARKS
			Q'TY	INCLUDING						
1	51043 147 42	HOUSING	1							
2										
3	51090 117 09	PROTECTOR	2							
4	335L 0616	FLANGE BOLT	4							
5	512L 0600	HEXAGON NUT	4							
6	36065 180	COVER	1							
7	342L 0612	FLANGE BOLT TAPPING	2							
8	36065 436	COVER	1							
9	342L 0612	FLANGE BOLT TAPPING	3							
10	11006 155	STAY C.P.	1							
11	342L 0612	FLANGE BOLT TAPPING	2							
12	11113 407	STAY	1							
13	342L 0612	FLANGE BOLT TAPPING	1							
14	11113 292	STAY	1							
15	342L 0612	FLANGE BOLT TAPPING	2							
16	36068 196 46	GUARD	1							
17	36080 149	RUBBER SHEET	1							
18	64014 324	SHAFT	1							
19	68013 336	SPRING	1							
20	71082 111	FAN ASSY	1							
21	51125 103	FAN		1						
22	11102 151	HOLDER		1						
23	31062 169	PRE-COAT LOCK BOLT		4						
24	579L 0600	FLANGE NUT		4						
25	61024 208	SPACER	1							
26	91014 159 59	BLADE	1							
27	31057 197	HEXAGON BOLT	2							
28	31057 243	HEXAGON BOLT	4							



PARTS LIST

46014-234

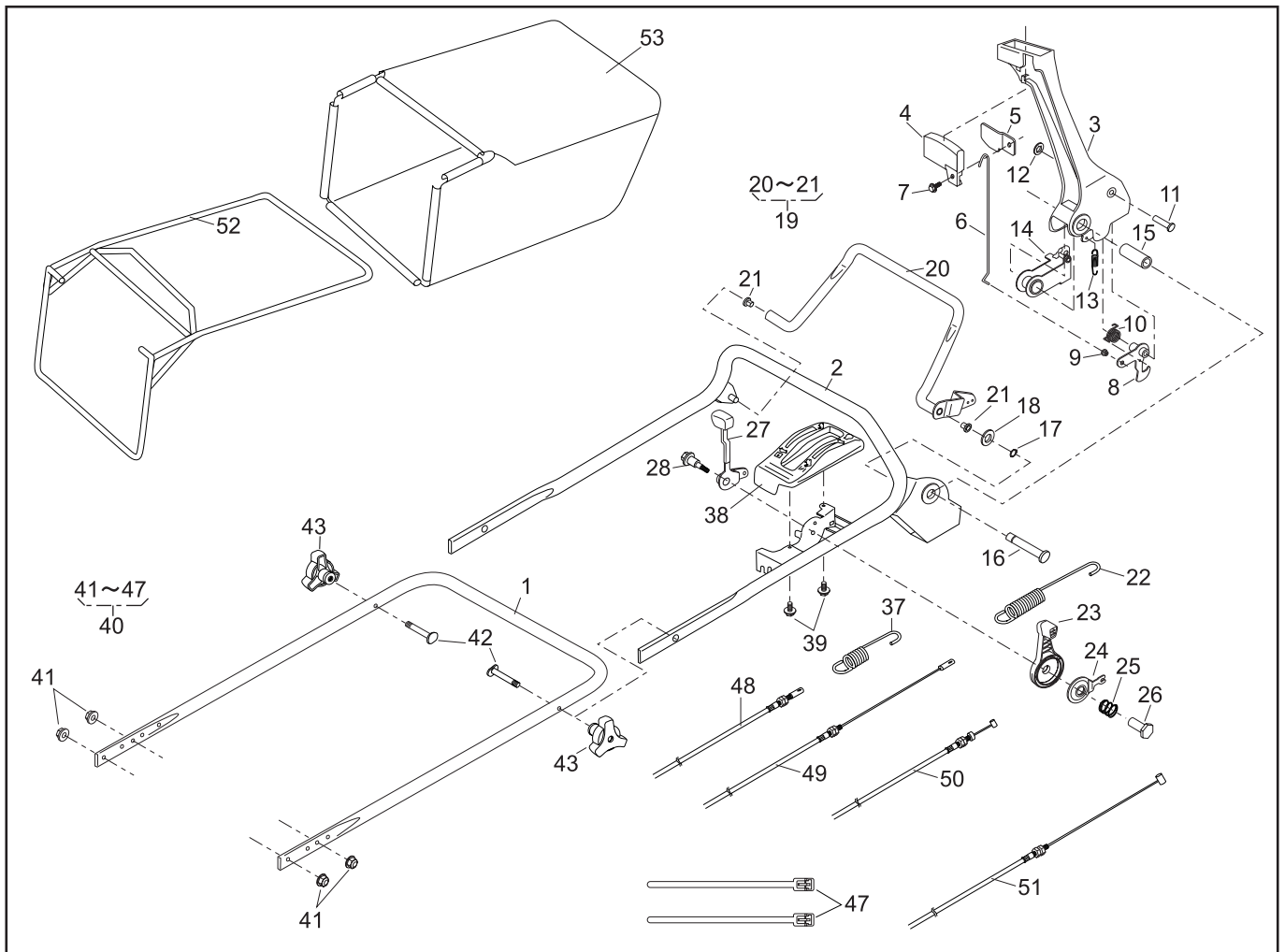
REF. No.	PARTS No.	PARTS NAME	GRASS-CUTTING			2/2	Feb.09,2005
			Q'TY	PRICE()	RECOMM.(%)		
			INCLUDING		Lot.100		REMARKS
29	61024 142	SPACER	3				
30	71067 106	BRAKE ASSY	1				
31	31057 196	HEXAGON BOLT	1				
32	671V 1000	CONICAL SPRING WASHER	1				
33	91097 101	UNIVERSAL JOINT	1				
34	812V 2000	C-SNAP RING FOR SHAFT	1				
35	717B 0418	PARALLEL PIN	1				
36	64014 358	SHAFT	1				
37	91049 132	CONNECTOR	1				
38	68036 280	WASHER	1				
39	816V 0800	E-SNAP RING	1				
40	36065 438	COVER	1				
41	342L 0616	FLANGE BOLT TAPPING	1				
42	51116 149	HANDLE BRACKET(L)	1				
43	51116 150	HANDLE BRACKET(R)	1				
44	31057 255	HEXAGON BOLT	4				
45	512L 0800	HEXAGON NUT	4				
46							
47							
48							
49							
50	71008 275	GEAR CASE ASSY	1				
51	36046 150	SAFETY GUARD	1				
52	11012 126	HANGER BAND	2				
53							
54	569L 0600	FLANGE NYLON NUT	2				
55	122039	ENGINE:HONDA GXV160H2-SFL1-R280	1				
56		WOOD RUFF KEY	1				



PARTS LIST

46014-250

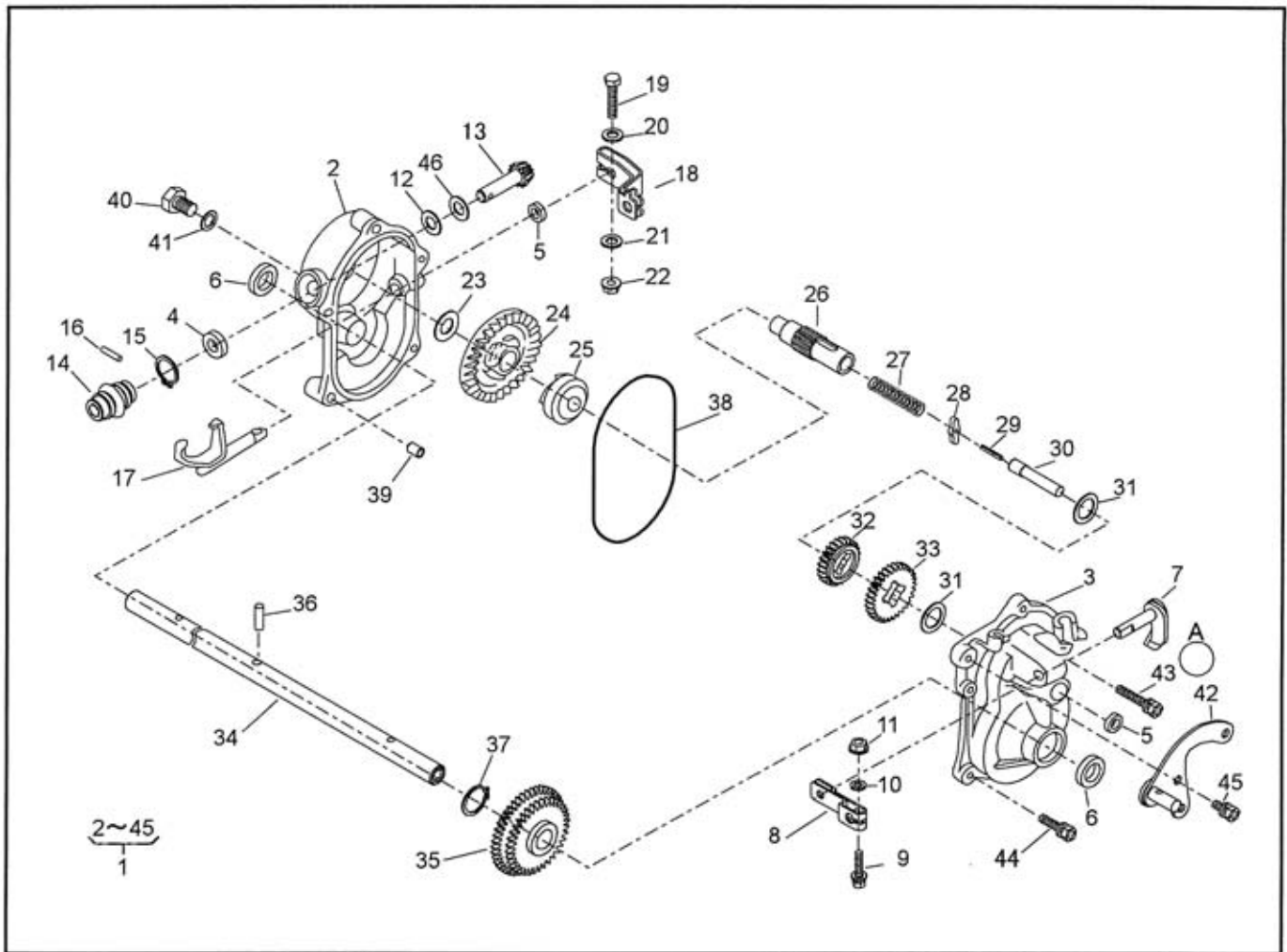
REF. No.	PARTS No.	PARTS NAME	HANDLE			1/2	RECOMM.(%) Lot.100	Feb.08,2005	REMARKS
			Q'TY	INCLUDING	PRICE()				
1	51027 254	HANDLE	1						
2	51027 255	HANDLE	1						
3	11095 172	LEVER(BBC)	1						
4	36110 102	BUTTON	1						
5	11049 109	SLIDE PLATE	1						
6	64014 336	SHAFT	1						
7	335N 0612	FLANGE BOLT	1						
8	71203 135	ARM C.P.	1						
9	76007 183	BUSH	1						
10	68013 371	SPRING	1						
11	31056 127	GIB-HEADED PIN	1						
12	576V 0600	PUSH NUT	1						
13	68013 372	SPRING	1						
14	11109 111	LINK	1						
15	61023 190	SLEEVE	1						
16	64014 337	SHAFT	1						
17	812V 0800	C-SNAP RING FOR SHAFT	1						
18	613L 0800	WASHER	1						
19	71161 114 09	LEVER ASSY	1						
20		LEVER		1					
21	76007 131	BUSH		2					
22	68013 374	SPRING	1						
23	91010 169	THROTTLE LEVER(GXV120/GXV160)	1						
24	61003 113	THRUST PLATE	1						
25	68013 356	SPRING	1						
26	31058 168	NUT	1						
27	11095 117	LEVER	1						
28	31062 109	PRE-COAT LOCK BOLT	1						



PARTS LIST

46014-250

REF. No.	PARTS No.	PARTS NAME	HANDLE		2/2	Feb.08,2005
			Q'TY INCLUDING	PRICE()		
29						
30						
31						
32						
33						
34						
35						
36						
37	68013 161	SPRING	1			
38	71900 796	COVER ASSY	1			
39	470L 0514	(+)TAPPING SCREW	2			
40	71900 895	BOLT SET	1			
41	569L 0800	FLANGE NYLON NUT	4			
42	31057 134	BOLT	2			
43	36061 118	KNOB	2			
44						
45						
46						
47	68028 103	WIRE BAND	2			
48	91003 125	CONTROL CABLE	1			
49	91003 170	CONTROL CABLE	1			
50	91001 329	THROTTLE WIRE(GXV120/GXV160)	1			
51	91003 169	CONTROL CABLE(BBC)	1			
52	11062 178	FRAME C.P.	1			
53	36098 136	GRASS BAG C.P.(Black)	1			
54						
55						
56						



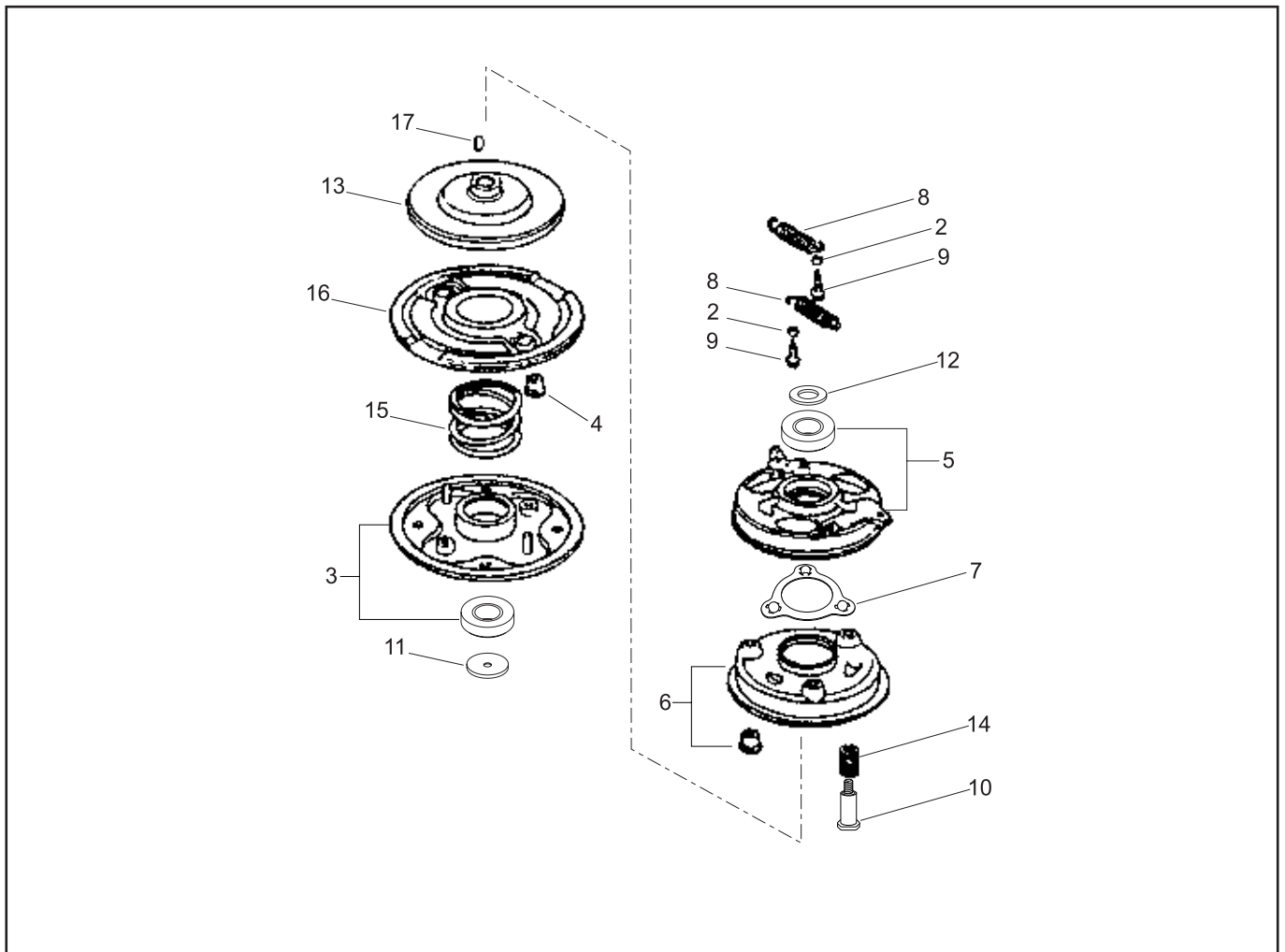
PARTS LIST

GEAR CASE ASSY (71008-275)

P/L No. 46014-262-04

NOTE

REF. No.	PARTS No.	PARTS NAME	GEAR CASE			1/2	RECOMM.(%) Lot.100	Dec. 25, 2006	REMARKS
			Q'TY	PRICE()	INCLUDING				
1	71008 275	GEAR CASE ASSY	1						
2	51001 195	GEAR CASE	1						
3	51001 196	GEAR CASE	1						
4	61002 161	OIL SEAL	1					SD 10 20 5	
5	61002 162	OIL SEAL	2					SD 08 14 4	
6	61002 163	OIL SEAL	2					SD 15 24 5	
7	64024 104	SHIFTER SHAFT	1						
8	11104 119	ARM	1						
9	320L 0525	(+)HEXAGON BOLT (W/PW)	1					M5 × 25	
10	611L 0500	PLAIN WASHER	1					M5	
11	571L 0500	FLANGE NUT	1					M5	
12	61003 109	THRUST PLATE	1						
13	78003 130	PINION	1						
14	91097 101	UNIVERSAL JOINT	1						
15	812V 2000	C-SNAP RING	1	1				φ 20	
16	717B 0418	PARALLEL PIN	1	1				φ 4 × 18	
17	11097 106	SHIFTER FORK	1						
18	11104 137	ARM	1						
19	311M 0630	HEXAGON BOLT	1					M6 × 30	
20	611L 0600	PLAIN WASHER	1					M6	
21	613L 0600	PLAIN WASHER	1					M6	
22	571L 0600	FLANGE NUT	1					M6	
23	61024 117	SPACER	1						
24	78001 162	BEVEL GEAR	1						
25	11129 107	CLUTCH	1						
26	64014 236	SHAFT	1						
27	68013 262	SPRING	1						



PARTS LIST

BRAKE ASSY (71067-106)

46014-266

REF. No.	PARTS No.	PARTS NAME	BBC		1/1	RECOMM.(%) Lot.100	REMARKS
			Q'TY	PRICE()	Feb.09,2005		
			INCLUDING				
1	71067 106	BRAKE ASSY	1			-	
2	19512 883 000	FAN COLLAR	2			-	
3	72600 VA4 010	BLADE HOLDER ASSY	1			3	
4	72613 VA4 000	BLADE HOLDER BUSH	2			5	
5	75090 VA4 030	BALL CONTROL PLATE	1			10	
6	75100 VA4 010	BRAKE C.P.	1			3	
7	75110 VA4 000	BALL RETAINER C.P.	1			10	
8	75182 VA3 J00	CLUTCH RETURN SPRING	2			5	
9	90014 952 000	FLANGE BOLT	4			3	
10	90021 VA4 000	SPECIAL BOLT	3			3	
11	90409 952 000	WASHER	1			3	
12	90501 952 010	THRUST WASHER	1			3	
13	75130 VA4 000	DRIVE DISK	1			3	
14	75132 VA4 000	BRAKE HOLDER SPRING	3			5	
15	75183 VA3 J00	CLUTCH SPRING	1			3	
16	75150 VA3 J01	DRIVEN DISK C.P.	1			3	
17	94401 16150	WOOD RUFF KEY	1			15	
18							
19							
20							
21							
22							
23							
24							
25							
26							
27							
28							